

# holiday feeling



**GARDEN** The pool zone sits conveniently close to the living areas, surrounded by comfy furniture from Cosh Living. **LIVING ROOM** (opposite left) Hannah, Chris and the three boys on their family-friendly Jordan sofa. Flynn coffee table, also Jordan. Blue cushion, Tigger Hall. **OUTDOOR DINING** (opposite right) A table and chairs from Cosh Living are a great match for the home's black-metal window frames and external wall panels. Cloth napkins from Greenhouse Interiors.

## cheat sheet

**Who lives here** Stay-at-home mum Hannah and her husband Chris, partner at a consumer insights agency, with sons Henry, 10, Ashton, nine, and Charlie, two.

**Style of home** Contemporary four-bedroom new build with a farmhouse feel.

**🕒** The couple purchased the property halfway through the build a few years ago, and made slight changes to the original design to better suit their family.

Country and coastal influences collide in this contemporary farmhouse on Victoria's Mornington Peninsula, where a family planned to spend weekends but then set up home



**T**he ideal holiday house is the perfect confluence of several factors. It's in a beautiful location, it's fairly easy to maintain, and it has space for family and friends when they stay over. Most importantly though, it has a feeling of retreat that invites rest and relaxation.

For homeowners Hannah and Chris Crook and their three sons, that's exactly what this striking property in the bucolic coastal village of Flinders has become. A 90-minute drive from Melbourne, the new build began life as what was intended to be a holiday home. "It was our initial plan to use this place as our weekender," explains Hannah. "Increasingly, especially given the current climate, we spend the bulk of our time here."

The home's story, however, begins with the building company, Montique Construction, which set out to create a modern farmhouse inspired by similar projects in New Zealand that would complement the coast-meets-country location. From early on, they worked in collaboration with Mount Martha-based interior-design studio Kate Walker Design (KWD).

"The property was designed for Montique Construction and then adapted to suit the clients' requirements when they purchased it halfway through the build process," says Kate Walker. The design itself is also a meeting of two halves. Connected by an entrance hall featuring barn doors at either end, "the house can be simply split into two functional areas: the kids' wing with their playroom, bedrooms and bathrooms, and the grown-ups' wing, with our beautiful kitchen, living space and bedroom/ensuite," says Hannah.

Sophisticated and featuring subtle layers of texture, the kitchen is a masterclass in modern-farmhouse style. Durable family-friendly materials were selected for the space, with Jaipur quartz stone in warm white on the prep bench carefully chosen to complement the white Aga oven. The timber joinery (in the kitchen and butler's pantry) offers another moment of understated texture, while the handmade tiles that clad the splashback and rangehood give the effect of aged, glazed bricks.

From the kitchen, there is a direct view to the impressive stone-clad fireplace. "It's such a feature," says Kate. "We wanted a stacked effect, and the clay bricks from PGH Bricks work perfectly to create a real focal point."

The house's two main zones are differentiated by their colour schemes, with the children's wing using much more colour and the grown-ups' side presenting as more restrained and classic. "For the three boys, we explored the blue theme," says Kate. "The colours we chose give their rooms so much personality."

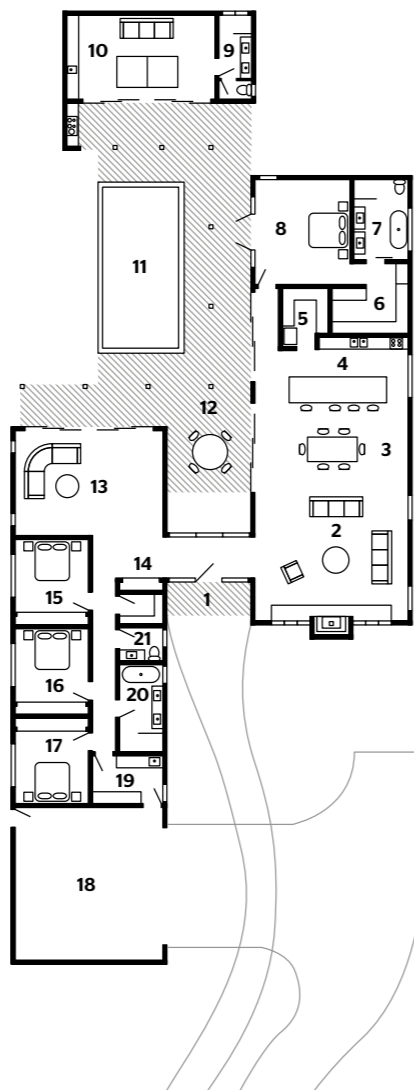
What's more, the layout is ideal for having people over. The single-storey design facilitates a seamless transition between key areas, all flowing out to the extensive outdoor-entertaining areas. "It accommodates multi-generational gatherings so well," says Hannah. The kids can escape to the garden, the pool or pool house, and the adults can congregate around the fire pit, in the courtyard or back in the kitchen.

"We love sitting with a glass of wine in the evenings, watching the sun setting through our living-room windows with the open fire blazing," adds Hannah. "The view is incredible." **LD**

KWD is at [katewalkerdesign.com.au](http://katewalkerdesign.com.au). Also see [montiqueconstruction.com](http://montiqueconstruction.com). Contributors: [littlebrickstudio.com.au](http://littlebrickstudio.com.au) and [e-ga.com.au](http://e-ga.com.au)

**FAMILY ROOM** Huge windows frame the beautiful view of the pool and lawn-covered backyard. Valley modular sofa and throw, Jordan. Cushions, Tigger Hall.  
**STUDY NOOK** (opposite left and right) Between the living areas and the bedroom wing is this tucked-away desk space adjacent to the front door, so there's no delay when visitors pop round. Black stool, Mark Tuckey, Hall runner, The Panton Store. *Surfer's Escape* photographic print (on the far wall), Coastal Living.





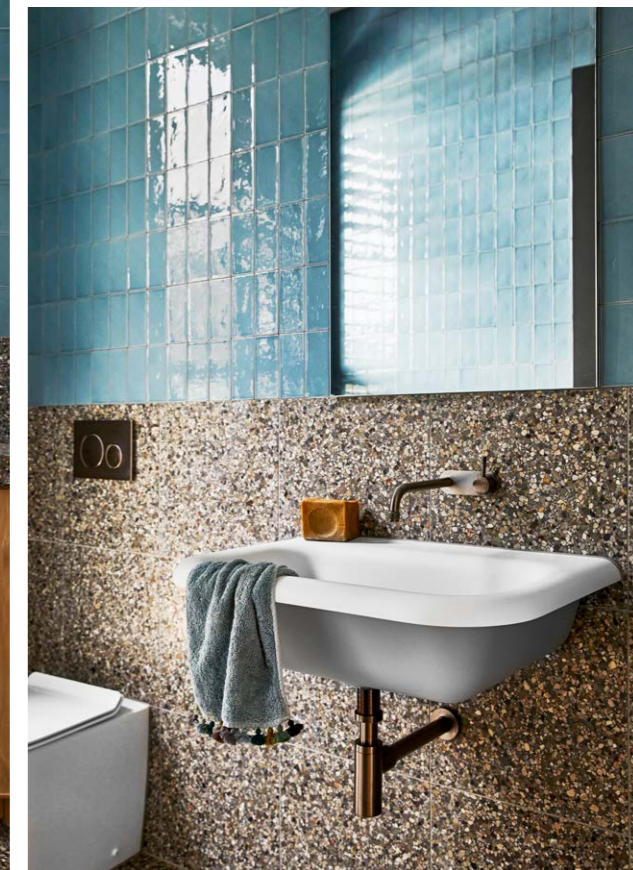
- 1 Entry
- 2 Living area
- 3 Dining area
- 4 Kitchen
- 5 Butler's pantry
- 6 Walk-in wardrobe
- 7 Ensuite
- 8 Main bedroom
- 9 Bathroom
- 10 Pool house/rumpus
- 11 Pool
- 12 Outdoor dining
- 13 Family room
- 14 Study nook
- 15 Bedroom
- 16 Bedroom
- 17 Bedroom
- 18 Garage
- 19 Laundry
- 20 Bathroom
- 21 Powder room

“The modern-farmhouse look is all about texture... highlighted with black industrial elements”

KATE WALKER, INTERIOR DESIGNER



**KITCHEN/DINING** (this page and opposite left) The island bench has a timber-veneer finish in Porter's Paints Mineral. Vertically stacked ceramic subway tiles from KWD clad the splashback and rangehood. Benchtop, Jaipur Quartzstone. Dining table and chairs, Mark Tuckey. Vera vessel in Nutmeg, Lightly Design.  
**BUTLER'S PANTRY** (opposite right) Vertically stacked tiles in the kitchen are mirrored in the lines of this space. A wine fridge is tucked under the bench.  
**LAUNDRY** (opposite bottom) Black and white triumph in here, with the grey terrazzo-style bench meeting in the middle. Muuto 'Restore' basket, Huset.



**BEDROOM** (top left and above) Colour has been used extensively in the children’s wing, where each room has a blue base. Art print by Raymond Savignac. **MAIN BEDROOM** (top right) An artwork by Marcia Priestley, bought through Greenhouse Interiors, adds just enough interest to the white wall. Bedside lamp, House Of Orange. Throw, Jordan. Light-blue cushion, Bonnie And Neil. **POOL HOUSE** (above right) Hand-glazed wall tiles bounce light around the bathroom and look great with the country-style cabinetry. Vessel, Established For Design. Towel, Kobn. **BATHROOMS** (opposite) Designer Kate Walker wanted to ensure the generously sized wet areas didn’t feel cold. “We used a mix of materials to break up the spaces and make them warm and soothing,” she explains.



**POOL HOUSE** Aged limestone floor tiles are perfect for wet feet. **FACADE** (above left) Clay Lang Mursten bricks from PGH cover the chimney and are a striking point of contrast against the charcoal paintwork in Dulux Taihape. **OUTDOOR SHOWER** (opposite) People and pets love the open-air washroom.

LESSONS LEARNT

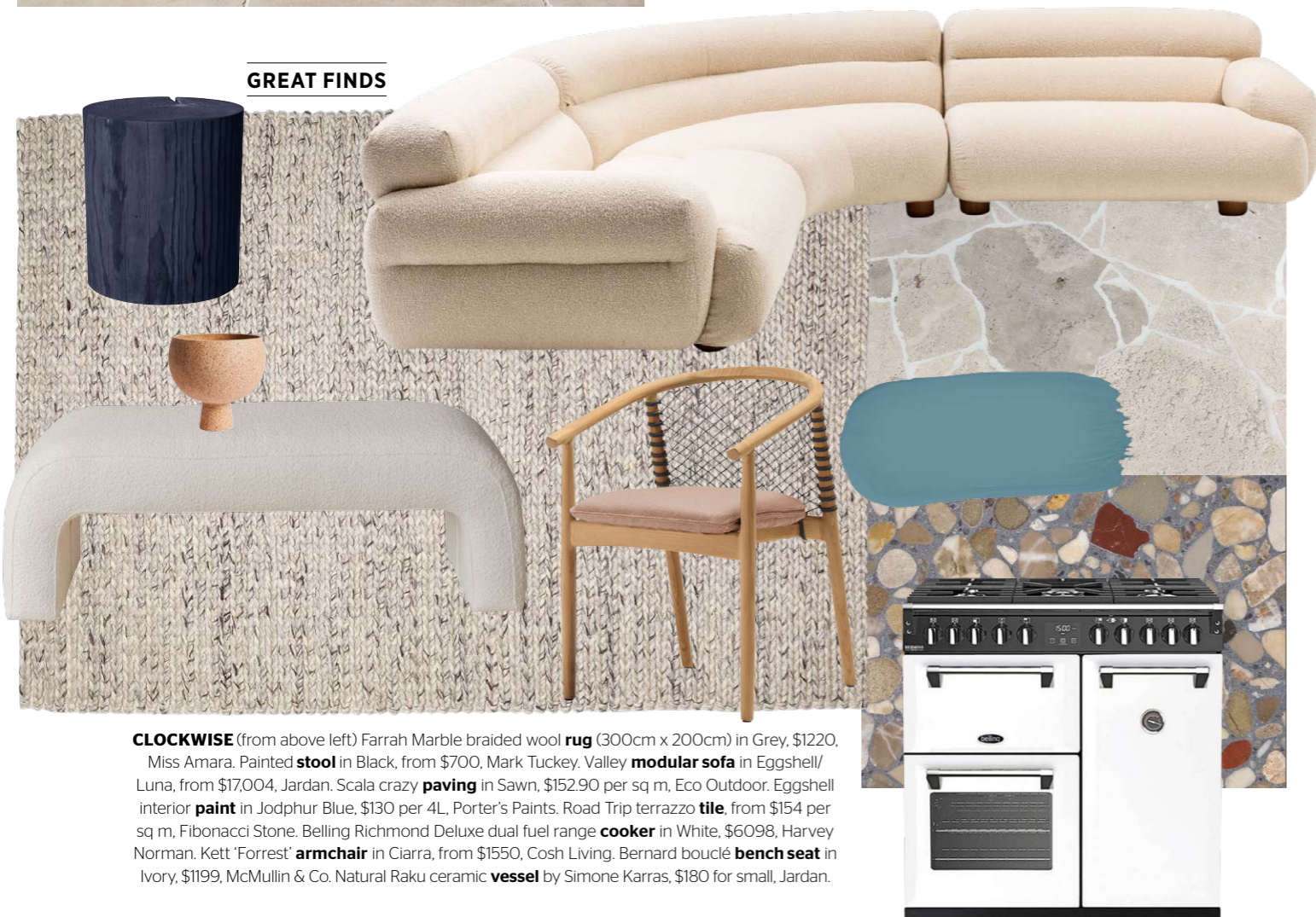
“It’s important to work with a good team”

KATE WALKER, INTERIOR DESIGNER

“To design your optimal home, you’ll need either an architect or a building designer and an interior designer.

If you have the right team, who can communicate really well with each other and understand the brief, you’ll achieve a fantastic result.”

GREAT FINDS



**CLOCKWISE** (from above left) Farrah Marble braided wool rug (300cm x 200cm) in Grey, \$1220, Miss Amara. Painted stool in Black, from \$700, Mark Tuckey. Valley modular sofa in Eggshell/Luna, from \$17,004, Jordan. Scala crazy paving in Sawn, \$152.90 per sq m, Eco Outdoor. Eggshell interior paint in Jodphur Blue, \$130 per 4L, Porter’s Paints. Road Trip terrazzo tile, from \$154 per sq m, Fibonacci Stone. Belling Richmond Deluxe dual fuel range cooker in White, \$6098, Harvey Norman. Kett ‘Forrest’ armchair in Ciarra, from \$1550, Cosh Living. Bernard bouclé bench seat in Ivory, \$1199, McMullin & Co. Natural Raku ceramic vessel by Simone Karras, \$180 for small, Jordan.

